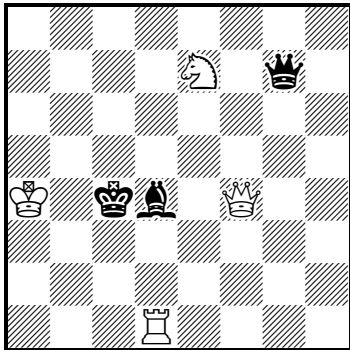


Do have a go at solving the following 'Chess Problems'. They are not positions from games: they are composed (constructed) for enjoyment. White plays up the board in each position. The numbers on the right below the diagrams are the number of white and black pieces in the diagrams. Write your solutions alongside the diagrams.

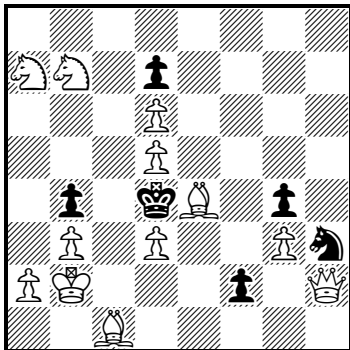
'#2' means **White to play and mate in two moves.** Give White's first move only.

1)



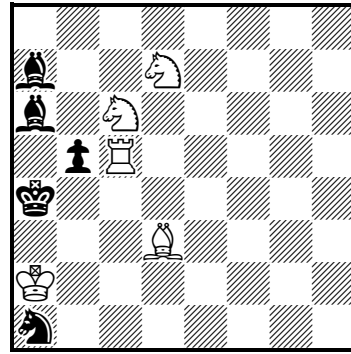
#2 (4 + 3)

2)



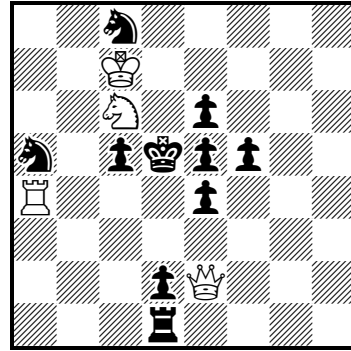
#2 (12 + 6)

3)



#2 (5 + 5)

4)



#2 (4 + 10)

Name of School: _____

Contact email: _____

For more information about chess problems, please visit:

<http://www.theproblemist.org>