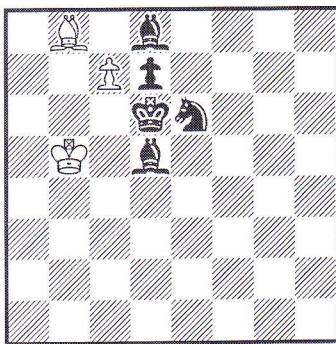


Do have a go at solving the following 'Chess Problems' They are not positions from games: they are composed (constructed) for enjoyment. White plays up the board in each position and you only need to give White's first move.

'#1' means 'White to play and mate in one move.'

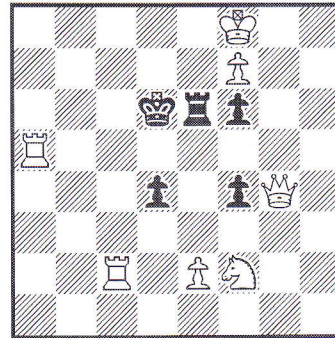
'#2' means 'White to play and mate in two moves.'

1)



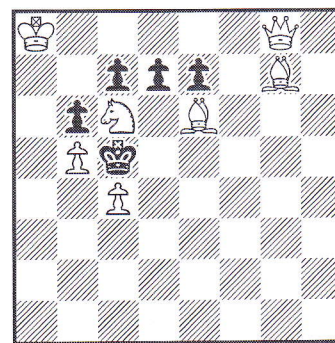
#1

3)



#2

4)

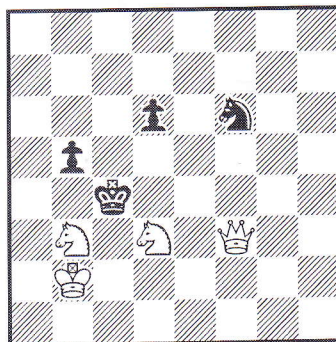


#2

For more information about chess problems, please visit:

<http://www.theproblemist.org>

2)



#2

Entries should be emailed
via a member of staff's email
to
dep.manager.secondary@englishchess.org.uk.
or handed to Phill Beckett
(with Kings Grantham)
before 1st November 2015